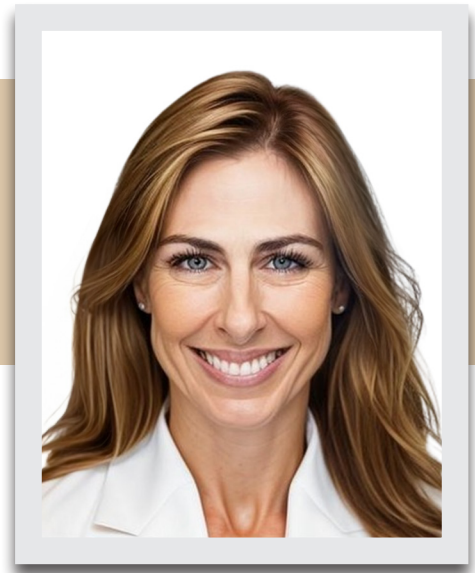


Suzanne Bach, CPA, CIT

Shareholder

suzanne.bach@saltmarshcpa.com
www.saltmarshcpa.com



Suzanne is a shareholder in the Tax & Accounting Services practice of Saltmarsh, Cleaveland & Gund. She began her career in public accounting in 2003, focusing on tax and advisory services. Her primary areas of experience include providing auditing, accounting, taxation and consulting services for the firm's construction, manufacturing and technology clients and a variety of not-for-profit entities. She is active in both professional and community associations, regularly speaking at seminars and sharing her expertise on various accounting-related topics with an emphasis on construction and manufacturing.

Education

B.S. Accounting - University of South Florida

Certifications

Certified Public Accountant - Florida

Construction Industry Technician (CIT)

Professional Affiliations

American Institute of Certified Public Accountants (AICPA)

Florida Institute of Certified Public Accountants (FICPA)

Construction Financial Managers Association - Tampa Bay Chapter

Florida Surety Association (FSA)

Associated Builders and Contractors (ABC)

Florida Transportation Builders Association (FTBA)

Bay Area Manufacturers Association (BAMA)

Community Affiliations

Tampa Bay Community Foundation - Council of Professional Advisors