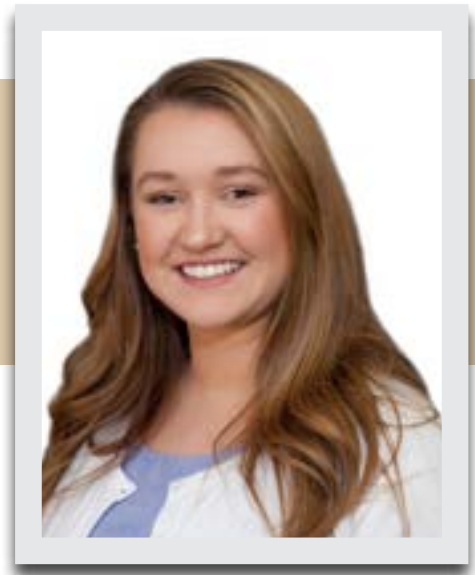


# **Nancy Patton**

## **Marketing Manager**

nancy.patton@saltmarshcpa.com  
www.saltmarshcpa.com



Nancy is a marketing manager for Saltmarsh, Cleaveland & Gund. She assists in coordinating, monitoring, and implementing marketing initiatives for the firm and serves as a liaison with outside consultants in marketing, advertising, and public relations. Nancy is also responsible for planning and executing special events and seminars for the firm while managing current and prospective client data, distributing press releases, and coordinating proposals.

### **Education**

B.A. Communications/Public Relations - University of West Florida

### **Community Affiliations**

Alpha Gamma Delta - Northwest Florida Alumnae Chapter